

Northern Lace

by Elizabeth Lovick

Known Errata

*Below are errors I know of in my patterns.
I am very sorry to have let them slip through...
Please note that once I have been told about an error I change the
pattern masters.*

*If you come across any other errors PLEASE let me know –
that way you will be helping not only me
but all the other knitters with the same patterns! Thank you.*

Patterns for North Ronaldsay Wool

Triangle Shawl

In very early copies, the row numbers are incorrect from row 17 to 23. They should read **17, 19, 21**.

Gutter Girl's Gansey

The number of panels is wrong in early patterns. The body should read:

round 1 PM, *k1, p1, k13, work first row of chart **6 (7, 8, 9, 10)** times, p1, k1, p1, k13, p1*, PM. Work from * to * once.

round 2 PM, *p1, k1, k13, work second row of chart **6 (7, 8, 9, 10)** times, k1, p1, k1, k13, k1*, PM. Work from * to * once.

Panel Hat and Mitts

The number of stitches to cast on for the smaller mitts is wrong. The mitt pattern should start: **With 3 mm needles, cast on 40** (48) sts.

Lace Wash Cloth Sets

Old Shale wash cloth

The chart is correct.

row 3 should read:

k3, *k2tog three times, (yo, k1) six times, **k2tog** three times. Repeat from * to the last 3 sts, k3

Papay Shawl in Yarn Forward Magazine

After the Fourth Increase sequence (411 sts), the chevrons are the wrong way round. It should read:

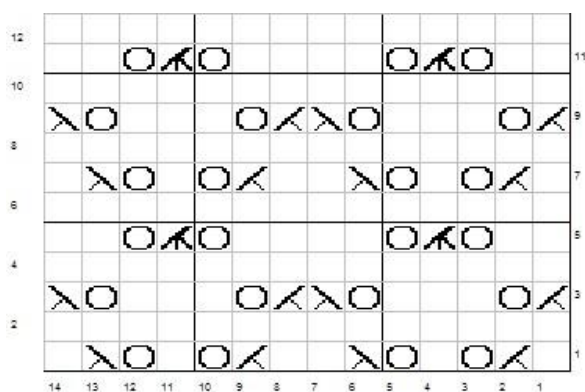
Work the 4 rows of the **Chevron** chart

Work the 6 rows of the Cat's Paw chart

Work the 4 rows of the **Reverse Chevron** chart

Shetland Sampler Cape

The **second part of the chart for Cat's Paw** is all wrong. The written instructions are right. The correct chart is below:



Mistake Ribbing Cowls

The pattern should only be **rows 1 and 2** for the sample shown.

If all four rows are used you get a spiral rib, which also works well, but isn't what is shown!

Hoswick Jacket

The first row of the arm hole shaping of the body gives the wrong numbers of sts for the fronts and back. It should read:

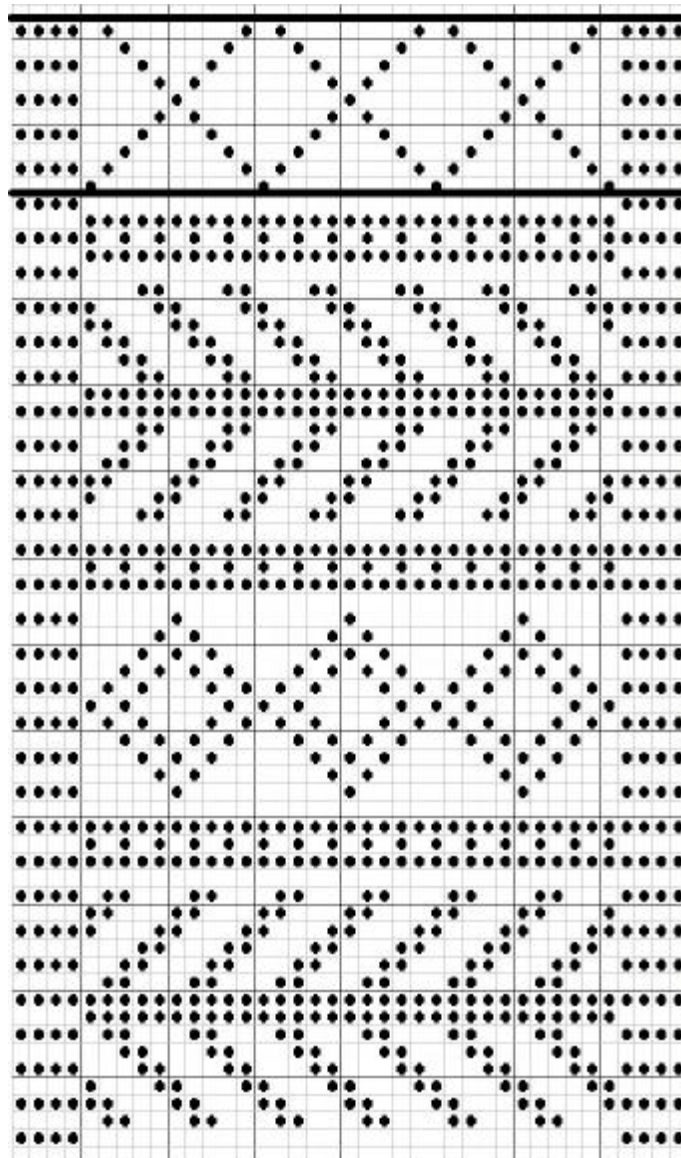
Round 1 kts, sm, work 62 (70, 78, 85, 92), pm, work 6 (10, 14, 20, 26) sts, and place these on a length of yarn, work 125 (141, 159, 171, 185), pm, work 6 (10, 14, 20, 26) sts and place these on a length of yarn, work 62 (70, 78, 85, 92), sm, kts

The rest of the body and the sleeves line up correctly.

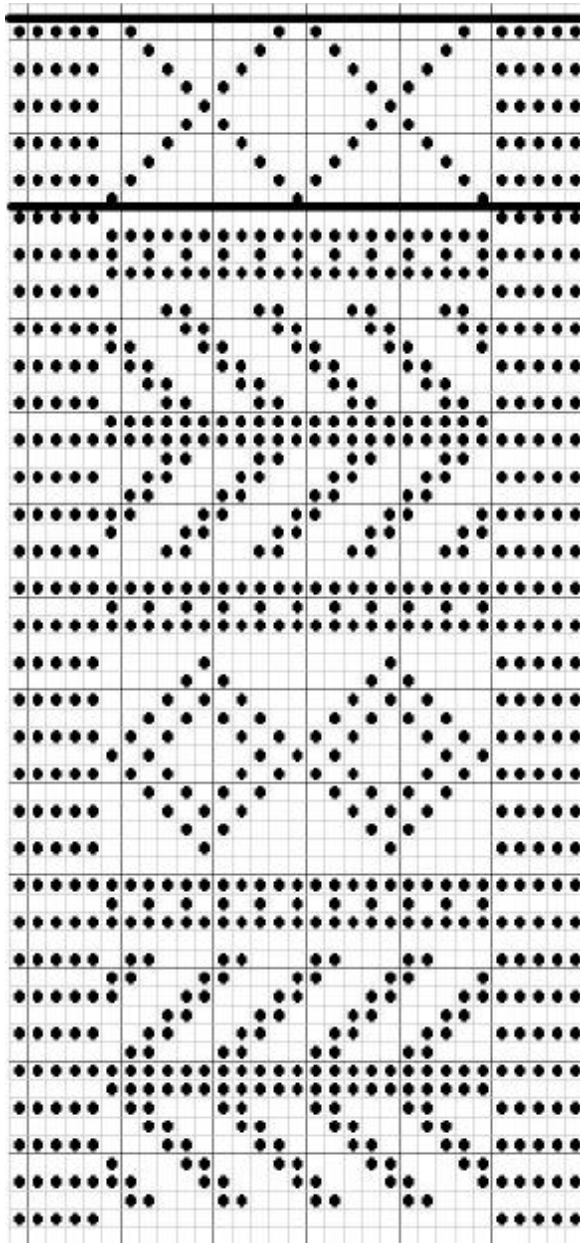
Fishermen's Scarves for Men and Boys

There are a couple of mistakes in the charts for the Chevron and Diamonds pattern. The correct charts are below:

Men's Chart



Boy's Chart



Swagger Shawl

Edging

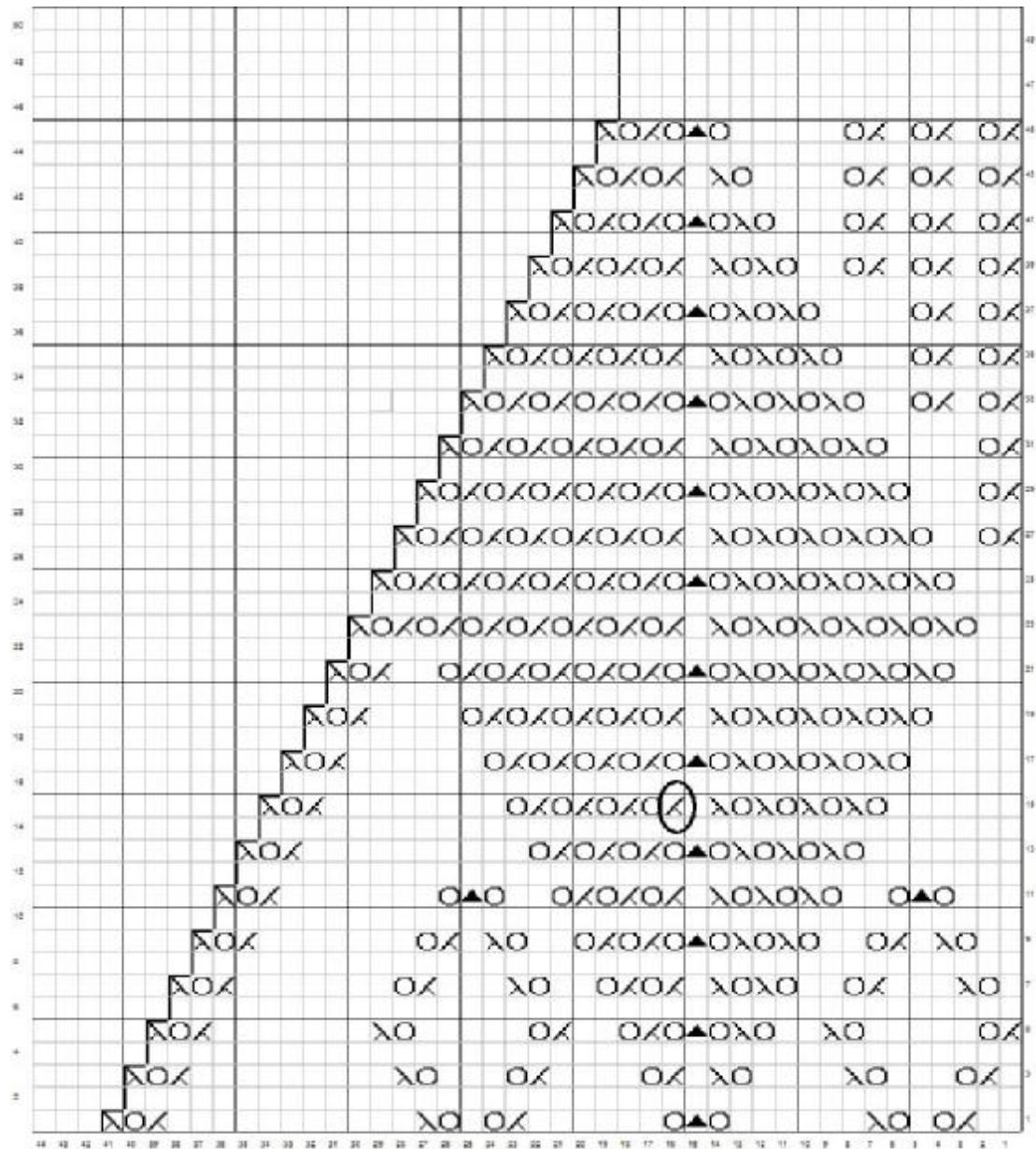
row 3 should read s1, k2, k2tog, yo, k3, yo, k2togtbl, k1, yo, k2togtbl, yo, k2
(chart is correct)

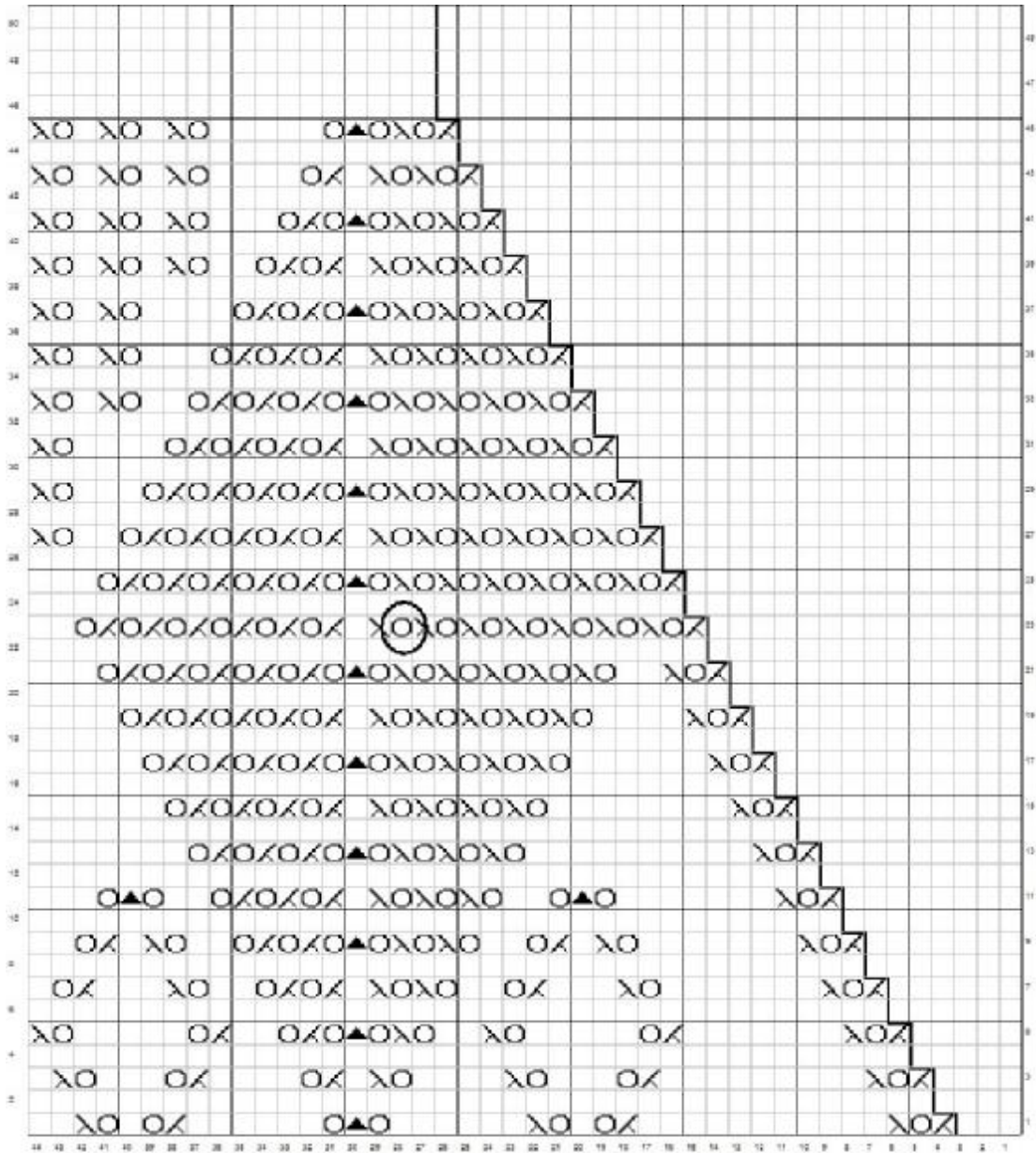
Border

row 1 should read **k (200 sts)**

row 2 k

Border Charts – there is a k2tog left out of the left corner chart, and a k2tog inside of a yo on the right corner chart. The corrected charts are below:





Over Sized Berets

Two Colour Beret

Row 9 should read *k1, yo, **k3**, yo, k3tog, yo, **k3**, yo. Repeat from * to end of row (85 sts)